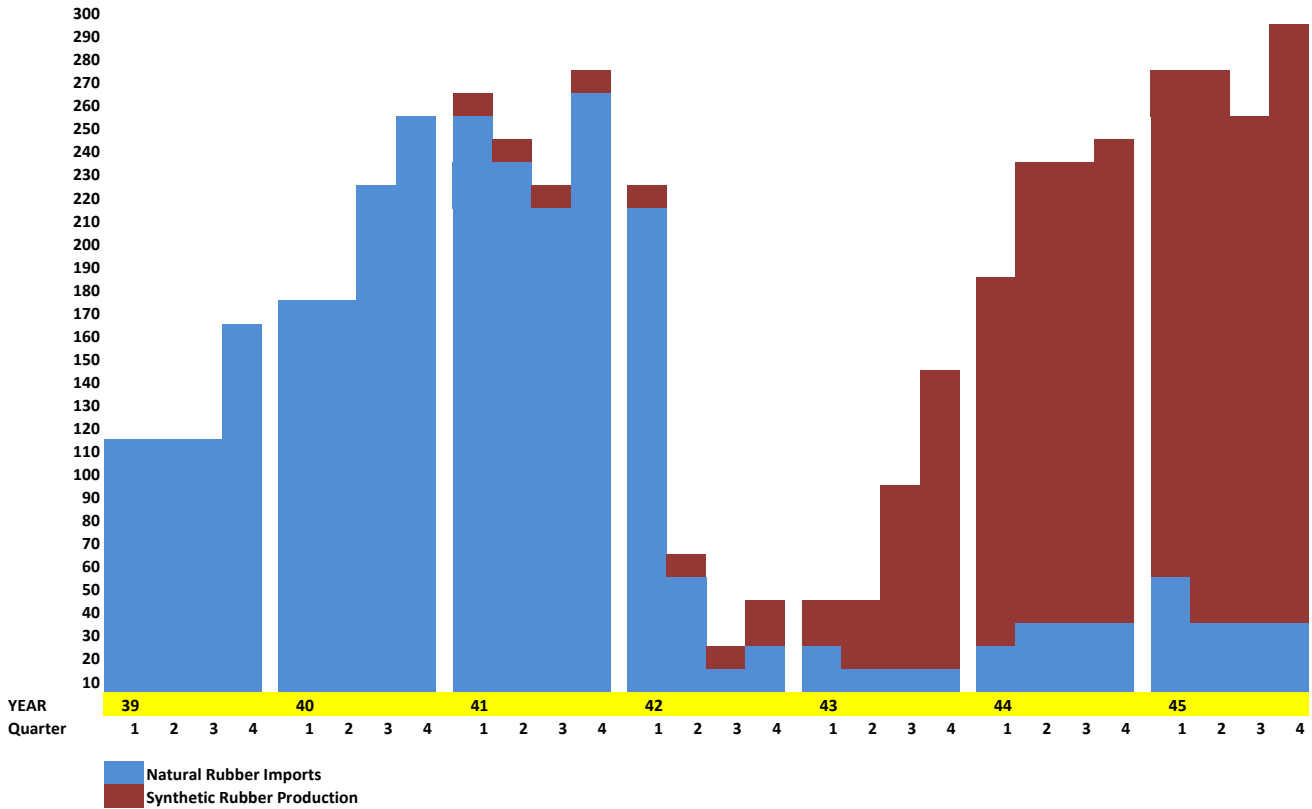


Natural Rubber Supply and Synthetic Rubber Production in the United States: 1939 - 1945

Char C.1

1,000 Tons



Rubber, which before the war was imported from Malaya, was one of the few commodities that was in short supply in the United States. Although stockpiles were built up in the prewar period, 1942 saw a dramatic collapse in natural rubber supply after Japan's conquest of British Malaya. It took 18 months for US Industry to be able to replace natural rubber with a synthetic supply.

Francis Pike, Hirohito's War, The Pacific War 1941 - 1945 [Bloomsbury 2015]